



NWF Silage Additives

NWF Silage Additives are designed to preserve and enhance forage, increasing palatability, available sugars and cow performance.



TOP TIPS FOR QUALITY SILAGE

- Focus on clamp management monitoring for overheating and mould.
- Manage your forage crop paying attention to soil and crop condition to create rumen friendly silage.

Six Goals for Stable Silage

1. Rapid pH decline to optimum level
2. Proper spectrum of fermentable silage
3. Conversion of sugars
4. Minimize protein degradation
5. Control fermentation temperature
6. Minimize aerobic activity at feed out

NWF Sila-Guard Silage Additives

The range of NWF Sila-Guard Silage Additives are crop-specific silage inoculants offering exceptional quality and value in forage conservation technology.

The formulation for each range combines four key components formulated specifically to optimise the feed value, preservation and stability of grass, maize and wholecrop silage.

Features:

- Improves silage quality
- Increases digestible NDF and crude protein for more energy
- Reduces dry matter losses, minimising nutrient loss
- Improves aerobic stability so less heating
- Inhibits mould formation
- Easy to mix and apply
- Suitable for use in organic systems

Ingredients:

NWF Sila-Guard Silage Additives are a premixture of technological feed additives; *Pediococcus pentosaceus*, *Lactobacillus plantarum*, *Lactobacillus brevis*, Xylanase and Cellulase. Nutritional additives; dextrose, manganese sulphate and anti-caking agent sodium aluminosilicate.

Directions:

Each 150g pot is sufficient to treat 50 tonnes of fresh forage crop. Add contents of each pot to 50 litres of fresh, clean water and mix thoroughly. Apply the solution at 1 litre per tonne of fresh forage.

Storage:

Contains live microorganisms and active enzymes. Store in original sealed packaging in a cool, dry place below 10°C. Use within 18 months of date of manufacture.



NWF Sila-Guard 50



NWF Sila-Guard Maize



NWF Sila-Guard Wholecrop

Role of Lactic Acid

Two forms of lactic acid bacteria lower the pH and help get a quicker fermentation. Reduces spoilage organisms and wastage in the clamp by being active throughout the entire pH range. Improves nutrient retention by inhibiting plant enzymes. The value in this results from minimising nutrient loss and creating a more stable silage after ensiling.

Role of Acetic Acid

The *Lactobacillus brevis* bacteria produces acetic acid, inhibiting the heating of silage by slowing yeast and mould growth in silage and TMR when subjected to oxygen ingress. Reduces dry matter loss, making more energy available for feeding.

Role of Enzymes

The unique mixture of enzymes assist in the opening up of the fibre structure to improve digestibility and the separation of carbohydrates from lignin, which supports improved animal performance, including milk production.

Role of Microbial Stimulants

Microbial stimulants are added to kick-start the inoculant for rapid action at ensiling, protecting and helping the bacteria to work at peak efficiency. This helps ensure an effective mix of the product and activation of the bacteria for the most efficient application and results.



The NWF Ultra Guard silage additive range delivers unrivalled fermentation and stability for all crops and conditions.

Specifically tailored solutions for all your silages.

• Ultra Guard

Contains 2 synergistic strains of homofermentative lactic acid bacteria.

Contains a cellulolytic ENZYME complex combined with 2 strains of lactic acid bacteria.

• Ultra Guard Plus

Combines an elite "acidifying" strain of lactic acid bacteria and the patented "stabilizing" *Lactobacillus buchneri* NCIMB 40788.

All silages are different

- Silage is the largest part of the daily intake of most ruminants.
- To optimise palatability, feeding value and safety, silage characteristics should be as close as possible to fresh forage.
- The foundation of a well-preserved silage is a fast and deep acidification.
- Some forages are also prone to aerobic spoilage (ex: high DM and high starch content forages).
- Depending on opening time, challenges can be different (acidification, stability).
- Every challenge occurring during ensiling will have a negative impact on the economical valorisation of the harvest.



NWF Ultra Guard meets all EU and regulatory requirements and is manufactured by a leading global biotechnology company.

NWF Ultra Guard

NWF Ultra Guard is specially designed to optimise the fermentation process, maintain good palatability and to improve the forage digestibility in low sugar forages.

Benefits

- Rapid pH drop in the silo
- Rapid inhibition of Clostridia and Enterobacteria
- Better forage digestibility
- Lower dry matter loss at the ensiling phase
- Greater nutritive value, less energy loss, less protein breakdown and better fibre degradability



NWF Ultra Guard Plus

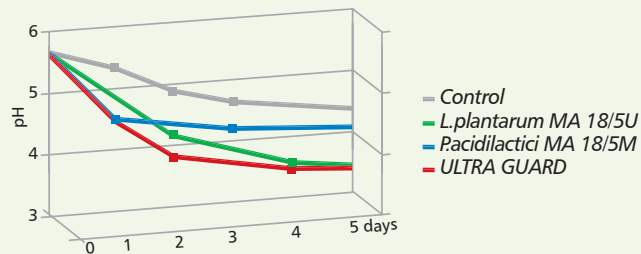
NWF Ultra Guard Plus is specially designed for all higher dry matter crops to reduce losses from the presence of yeasts and moulds, and to keep silage fresh and palatable for longer.

Benefits

- Inhibition of yeasts and moulds
- Greater aerobic stability. Longer stability of the silage at opening, lower dry matter loss and higher protection from aerobic spoilage
- Greater feeding value. Lower nutrient loss due to aerobic challenges, higher energy value as a result of *Lactobacillus buchneri* NCIMB 40788 and improved animal performance

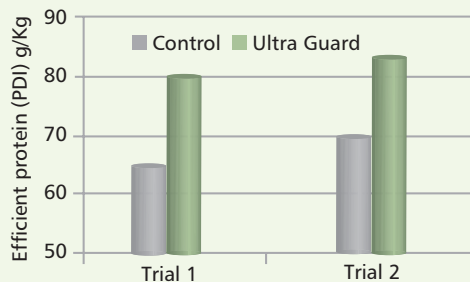


The synergy of two selected strains for fast and effective acidification.



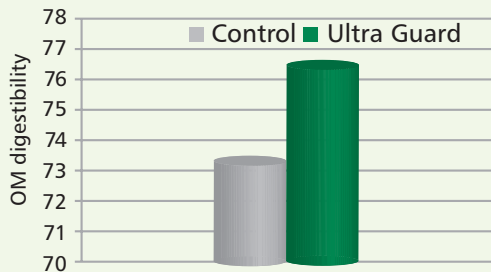
Lallemand, F, 1998

A rapid fermentation ensures more nutrients, including protein, are preserved for the cows.



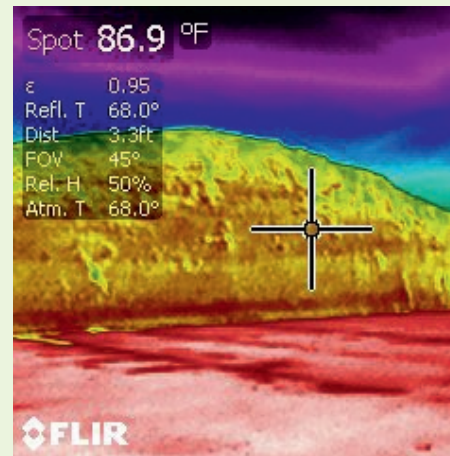
Lallemand, F, 1998

Enzyme package in NWF Ultra Guard can improve forage digestibility.

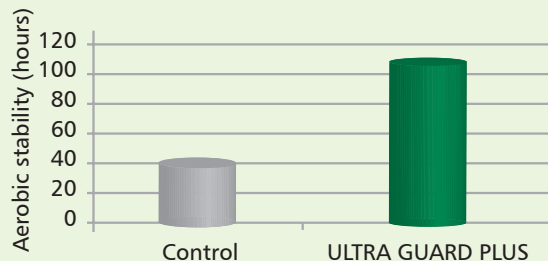


University of Honenheim, G, 2003

Heating silage will lead to environmental energy and dry matter losses.

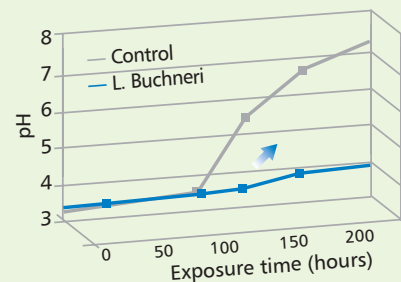


NWF Ultra Guard Plus enhances aerobic stability and keeps silage fresh and palatable for longer.



Aarhus University, Denmark, 2009

The *Lactobacillus buchneri* will inhibit yeast and mould populations which stabilises the pH during feedout.



University of Honenheim, G, 2003



NWF Laboratory

NWF Agriculture operates a state of the art laboratory at Wardle in Cheshire and process over 8,000 silage samples per year, conforming to the Forage Analysis Assurance Scheme, to analyse:

- Fresh grass
- Silage – grass, maize, whole crop
- Haylage

FREE analysis for NWF customers with results processed within 24hrs* of receipt of sample. (*48hrs during peak season)
NWF Specialists work alongside farmers and in-house nutritionists to develop and sustain the correct diets to maximise herd health and output.

As livestock dietary requirements become more complex and the aim to maximise herd health becomes of increasing importance, NWF Agriculture also offer a Mineral Analysis service to identify any areas for improvement.

STRETCH FILM

High Quality,
7 layered film
designed for high
speed wrappers



BALER TWINE

Comprehensive
range of Baler Twine



NET WRAP

Cross-Thread Net Wrap designed
for maximum crop protection





AGRICULTURE



NWF Agriculture is a national manufacturer of high quality dairy, beef and sheep feeds.

Whatever your farming system, our team will work with your farm objectives to deliver feed and advice to optimise livestock performance. All our feeds are backed by our experienced technical team and extensive on-farm services. We also supply a comprehensive range of associated products including minerals, milk replacers, supplements, fertiliser, seed and forage additives.

For more information, contact your
NWF Sales Specialist, call **0800 756 2787**
or email **sales@nwfagriculture.co.uk**



NWF Agriculture Ltd, Wardle, Nantwich, Cheshire, CW5 6AQ
Tel: 01829 261155

www.nwfagriculture.co.uk