



AGRICULTURE

Product Catalogue

Edition 6

WELCOME TO NWF AGRICULTURE

Established in 1871, NWF Agriculture has over 150 years' experience in supplying Britain's farmers with high quality animal feed, supplements and technical expertise.

NWF Agriculture supplies over 4,750 customers ranging from Scotland to Cornwall, with over 600,000 tonnes of feeds each year. With the majority of the business supplying ruminants, and leading the industry with dairy feed, NWF and its 250 employees are proud to support British Farmers.

Working alongside global suppliers, NWF Agriculture sources and supplies a comprehensive range of associated products for your herd and flock, ranging from minerals and molasses, to milk replacers and silage additives, and everything in-between. NWF Agriculture is able to supply our associated products nationally, including delivery to Northern Ireland.

For further information, advice and prices on any of the products featured in this catalogue, please speak to your local NWF sales specialist or call our dedicated trading team on 01829 797100.



PRODUCTION SITES



SCAN
the QR code for
your local NWF
Sales
Specialist

Welcome to NWF



Wardle

NWF Agriculture Ltd, Wardle, Nantwich, Cheshire, CW5 6AQ
Tel: 01829 261155

Wixland

NWF Agriculture Ltd, Wixland Mill, Wixland, Atherington, Devon, EX37 9HZ
Tel: 01769 560273

Longtown

NWF Agriculture Ltd, Sandysike Mill, Sandysike Industrial Estate, Sandysike, Longtown,
Carlisle, Cumbria, CA6 5SS. Tel: 01228 79190

Brayton

NWF Agriculture Ltd, Brayton Park Mill, Brayton Park,
Brayton, Wigton, Cumbria, CA7 3SX. Tel: 01768 881881

MILK REPLACERS

NWF ULTRA MILK ELITE

Ultra Life Elite is a LifeStart accredited skim-based milk replacer, with a 50% skim content and 100% dairy protein. It is highly digestible and carefully formulated with equal fat and protein levels to ensure it has an appropriate and specific nutrient profile to support the growing calf.

NWF ULTRA LIFE SKIM

A LifeStart accredited skim-based milk replacer. At 50% skim content this milk replacer is highly digestible and carefully formulated to ensure it has an appropriate and specific nutrient profile to support the growing calf.

NWF ULTRA MILK YELLOW

A top quality skim milked based calf milk replacer, ideally suited to the professional calf rearer or dairy units looking for high performance. At 50% skim and 100% dairy protein this milk replacer is highly digestible. It is suitable for many systems, particularly those wanting something special from their youngstock.

NWF ULTRA MILK GREEN

A skimmed milk-based product, ideal to promote early bloom and a healthy-looking calf, suited for many systems, particularly those selling stock at a young age. Contains 35% skim.

NWF ENERGIZED CALF MILK

A LifeStart accredited milk replacer, ECM has been developed with whole milk as the biological reference; the best of whole milk combined with the best of CMR. The LifeStart Programme helps to understand nature's way to unlock the early growth potential of the calf to further improve dairy farm efficiency in the future.

NWF ULTRA LIFE WHEY

A LifeStart accredited whey-based milk replacer. This milk replacer is carefully formulated to ensure it has an appropriate and specific nutrient profile to support the growing calf.

NWF ULTRA HI PRO HEIFER

A top quality whey-based milk replacer that is suitable for accelerated heifer rearing program's that require a high protein product.

NWF ULTRA MILK BLUE

This excellent whey-based product enables fast cost-effective growth and development with enhanced concentrate feed intake at this critical stage in life. A high energy calf milk replacer that reconstitutes easily.

NWF ULTRA MILK PLATINUM

A superior quality skim-based calf milk replacer with elevated levels of energy and protein. At 50% skim, 100% dairy protein content, this milk replacer contains high levels of milk proteins and is highly digestible. It is suitable for many systems, particularly those wanting something special from their youngstock.

NWF ULTRA MILK DIAMOND

A superior quality, 50% skim-based calf milk replacer, with elevated levels of oil and milk protein to promote accelerated growth and development at this critical stage of life.

NWF ULTRA MILK GOLD

A superior quality, highly digestible 50% skim milk replacer which has high levels of milk proteins. This replacer contains the Greenguard package.

NWF ULTRA MILK EMERALD

A 35% skim-based replacer, containing the additive package ensuring early bloom and healthy calves.

NWF ULTRA MILK RUBY

A superior quality whey-based calf milk replacer, with elevated levels of oil and milk protein to promote accelerated growth and development at this critical stage of life.

NWF ULTRA MILK SAPPHIRE

A high-quality whey-based milk replacer, a good all-rounder replacer which has the addition of the Greenguard to support digestive health and performance.

NWF ENERGIZED LAMB MILK REPLACER

Energized Lamb Milk is a precisely formulated lamb milk replacer containing specially selected milk products, highly digestible oils and proteins plus vitamins and minerals to satisfy the requirements of fast-growing lambs. It is available in skimmed milk (50%) or whey-based options.



MINERALS

MINERAL BUCKETS

Supplied in 20kg and 80kg buckets

CATTLE BREEDER

A specifically formulated mineral and vitamin lick to support the requirements of cows and heifers in the lead up to breeding.

CATTLE GP

A specifically formulated mineral and vitamin lick suitable for dairy cows, suckler cows, breeding youngstock and store cattle.

DRY COW

A specifically formulated dry cow mineral and vitamin lick to support the requirements of dry cows and in-calf heifers to support cow and calf health and where the risk of milk fever exists.

HIGH MAG

A specifically formulated mineral and vitamin lick designed to reduce the risk of grass staggers (Hypomagnesemia) in your livestock, suitable for cattle and sheep.

PROTEIN ENERGY

A specifically formulated high quality protein and energy feed tub suitable for grazing cattle and sheep.

EWES BREEDER

A specifically formulated high quality protein and energy lick developed for ewes all year round.



POWDERED MINERALS

Supplied in 25kg bags

NWF ULTRAMIN CATTLE GP

A general purpose mineral to help maintain the health and productivity of growing, rearing and suckler cattle.

NWF ULTRAMIN CATTLE HI MAG

Balanced mineral to meet the mineral needs of the cow whilst reducing the risk of magnesium deficiency, particularly in spring and autumn grazing cattle.

NWF ULTRAMIN DAIRY

High levels of all vitamins and minerals to support the needs of the modern dairy cow.

NWF ULTRAMIN ELITE DAIRY

A balanced high specification mineral targeted to meet the mineral requirements of the high yielding cow.

NWF ULTRAMIN DRY COW

An essential product when considering good dry cow management and getting the cow well established in the next lactation.

NWF ULTRAMIN ELITE DRY COW

An essential product when considering good dry cow management and getting the cow well established in the next lactation.

NWF ULTRAMIN GRASS MAIZE SILAGE

Specifically formulated to balance a typical dairy cow diet using both grass and maize silage within their diets.

NWF ULTRAMIN INTENSIVE BEEF

Specifically formulated to balance intensive beef finishing diets.

NWF ULTRAMIN INTENSIVE LAMB

Specifically formulated to balance intensive lamb diets.

NWF ULTRAMIN SHEEP GP

Specifically formulated to support the mineral requirements of the growing and adult ewe.

NWF ULTRAMIN SUCKLER COW

Specifically formulated to support the mineral requirements of the suckler cow through lactation.



MOLASSES

CANE MOLASSES

A highly palatable liquid derived from the extraction of sugar from cane. Cane Molasses offers an excellent source of rapidly fermented sugar based energy. Very high sucrose content making it ideal for use in most dairy, beef and sheep rations.

ECONOMOL

A dark brown, viscous liquid produced as a co-product of the production of sugar from the sugarcane plant mixed with water in flowable conditions, offering an excellent source of rapidly fermented sugar-based energy in a flowable form.

MILLSPEC 20

Blended from cane molasses and liquid co-products to give a rich source of sugars protein and organic matter. Low viscosity ensures easy handling in cold conditions and thorough absorption to promote dry matter intakes of all forages and mixed rations.

MOLALE

Molale provides the high palatability and energy of molasses, balanced with protein from a variety of sources. Easy to handle at low temperatures and shown to help ease respiratory problems through reduction of dust. Suitable for all feeding systems.

REGUMAIZE 24

A liquid feed comprising of Cane Molasses and urea. This unique process developed by ED&F Man Liquid Products is designed to give rumen bacteria exactly what they need to thrive on. Regumaize 24 is designed for rations which require a boost in both protein and energy. A very high protein from regulated release urea, providing a good source of palatable sugar based energy and rumen degradable protein.

REGUMAIZE 46

A liquid feed comprising of Cane Molasses and Urea. This unique process developed by ED&F Man Liquid Products is designed to give rumen bacteria exactly what they need to thrive on. Regumaize 46 provides a good source of palatable sugar based energy and rumen degradable protein.

REGUMAIZE 65

A liquid feed comprising of Cane Molasses and Urea. This unique process developed by ED&F Man Liquid Products is designed to give rumen bacteria exactly what they need to thrive on. Regumaize 65 is designed for diets in which protein levels need an extra boost.

REGUMIX 27

Regumix 27 is a highly palatable, molasses based liquid, rich in protein and energy, designed to get the most from forage. It is blended from Cane Molasses, Urea and liquids from the human food and drinks industries. The inclusion of urea results in the high crude protein level. Regulated release urea ensures slow availability of Nitrogen in synchrony with the energy released in the rumen.

REGUPRO 38

Regupro 38 is a highly palatable molasses blend with added Regulated Release protein, supplying a high protein option when sugar levels are less critical, for example when high levels of sugar beet pulp or fodder beet are being fed. The Regupro blends are designed to complement rations containing a high level of grass silage helping to correct any energy and degradable protein imbalances.

REGUPRO 50

Regupro 50 is a highly palatable molasses blend with added Regulated Release protein, supplying a high protein option when sugar levels are less critical, for example when high levels of sugar beet pulp or fodder beet are being fed. The Regupro blends are designed to complement rations containing a high level of grass silage helping to correct any energy and degradable protein imbalances.

SHEEPMOL

A high dry matter, high sugar blend of cane molasses, glycerine and liquid co-products formulated specifically to feed sheep. The unique mix of energy sources is ideal to promote healthy lamb growth and maintain ewe health.

SHEEPMOL PLUS

A high dry matter, high sugar blends of cane molasses, glycerine and liquid co-products formulated specifically to feed sheep. The unique mix of energy sources is ideal to promote healthy lamb growth and maintain ewe health. Sheepmol Plus has the added benefit of the vitamin and mineral package.



SUPPLEMENTS

ACID BUF

A pure rumen conditioner with bioavailable minerals. It is derived from marine algae and contains high levels of calcium, magnesium and other minerals. It is highly effective as a rumen buffer and stabilises rumen pH over longer periods of time. Acid Buf works in harmony with the animal's natural endogenous system for buffering excess acid leading to a stable and productive rumen environment. A healthier rumen can lead to improved production parameters.

CALCINED MAGNESITE

Calcined magnesite is produced from the raw material Magnesium Oxide which is quarried around the world. Calcined magnesite offers the most commonly used and economic source of supplementary magnesium for ruminant livestock.

CAUSTIC SODA PEARLS

The treatment of cereals, legumes and oilseeds with caustic soda pearls (Sodagrains treatment) is a well-proven and effective technique. Treated grains can be fed without further processing.

FEED GRADE UREA

Urea is an economic non-protein nitrogen (NPN) source for boosting protein levels in ruminant rations. It is also a highly effective preservative for cereals.

HYDRATED LIME (BIOLIME H90)

Biolime helps control bacteria and mastitis to protect cattle housing environments. Simple to handle and easy to apply, this specially blended hydrated lime is quick to take effect and produce results.

LIMESTONE FLOUR

Limestone Flour is used as a supplementary source of calcium. Limestone flour is a fine white powder, nominally less than 300 microns. The material has been crushed, milled, dried and screened, then milled and classified again to exceptional quality.

MAGNESIUM CHLORIDE FLAKES

Magnesium chloride is a highly soluble form of flaked magnesium.

NWF STABLE RUMEN PAK

A cost effective way of optimising rumen pH. Containing Yea-Sacc® and a blend of buffering agents. Combining a specially formulated range of buffers with improved fibre digestion from Yea-Sacc® to produce the optimal rumen environment.

NWF HEALTHY RUMEN PAK

Dairy cows often underperform for no apparent reason but in many cases the problem is poor rumen health. As the rumen produces around 70% of the energy and protein used by the cow, anything that disrupts the rumen disrupts the cow. NWF Healthy Rumen Pak contains Yea-Sacc® and Mycosorb A+, formulated to help ensure the conditions in the rumen are maintained at a level to promote high intakes, efficient digestion and increased yields. It can also deliver benefits when fed to cattle and calves. In cattle it will help increase liveweight gain by over 10%, improving carcass composition and reduce risk of bloat. Calves will see an improvement in dry matter intake and liveweight gains by 8%.

NWF MYCO CHALLENGE FARM PAK

An enhanced version of Healthy Rumen Pak that contains Yea-Sacc® and a higher rate of Mycosorb. Combined ensures that rumen conditions in the rumen are maintained at a level to promote high intakes, efficient digestion and increased yields.

NWF HEALTHY GUT

Containing Lactibute, a patented novel prebiotic that works to reduce the effects of leaky gut, improve energy partitioning within dairy cows and ultimately support milk production and performance

NWF HEALTHY GUT EXTRA

The NWF Healthy Gut Extra has been designed to be an effective solution to optimising the rumen and improve hind gut health all out of one bag, with the inclusion of Lactibute, Acid Buf and Opti Rumen.

NWF OPTI RUMEN

NWF Opti Rumen is a unique blend of plant extracts, essential oils and spices, which positively alters the rumen microbes to ensure optimal fermentation for more efficient production.

OMEGA 3

Bringing all the benefits previously associated with fishmeal, Omega 3 supplement is formulated to supply key fatty acids, including EPA and DHA, to support high yields, reproductive performance and immune systems.

OMEGA 3 TESTIMONIAL

In 2022, our herd was struggling a little with fertility, and our vet suggested adding Omega 3 to the diet. The rumen inert supplement was added to the TMR at a rate of 90g per head, and having used the product for nearly two years, we have seen an increase in conception rates, which has improved profitability of the herd.



SUPPLEMENTS

PDV SALT

Salt is an essential mineral in all species. PDV (Pure Dried Vacuum) salt is an alternative to Ground Rock Salt.

HIMALAYAN LUMP ROCK SALT

Salt is an essential mineral in all species. It is essential to promote saliva production and ensure optimum function of the digestive system.

SODIUM BICARBONATE

Sodium bicarbonate is one of the most commonly used rumen buffers in dairy cow diets.

SODIUM SESQUICARBONATE

Sodium sesquicarbonate contains a blend of sodium bicarbonate and sodium carbonate and is a source of sodium for cows and sheep.

SlurriN PRO

SlurriN PRO is a biological treatment designed to establish a thriving population of naturally occurring micro-organisms that work to optimise the value of slurry.

TECHMIX CALF RENOVA® For Calves

Calf Renova® is an easy-to-use bolus, containing a source of natural ingredients. The bolus includes a botanical extract, naturally occurring microorganisms (Direct Fed Microbials) and yeast products. Calf Renova® provides intestinal support through beneficial bacteria and plant extracts as an effect intervention for diarrhoea.



TECHMIX FRESH COW YMCP® For Cows

Fresh Cow YMCP® is the total fresh cow solution that provides rehydration and nutrients essential to maintain optimum peak yield while also helping to maintain health. The products provides more than just calcium to activate the metabolism and the rumen, helping with recovery and ease the transition into lactation.

TECHMIX RUMEN YEAST CAPS® For Cows

Rumen Yeast Caps® are a source of live yeast and vitamins in an easy-to-use bolus form to be used at any off-feed events.

TECHMIX BLUELITE® C HYDRATABS For Cows

BlueLite® C Hydratabs is a highly palatable electrolyte supplement providing oral hydration support to pre-weaned calves. With multiple energy sources and acidification that promote healthy guts. BlueLite® C Hydratabs can be administered with milk, milk replacer or water to enhance digestion, and has been proven to be an effective and easy way to ensure young calves maintain hydration.

BOVINE BLUELITE® For Cows & Calves

Hydration is the key component to herd health and performance. An easy-to-administer electrolyte, Bovine BlueLite® is very palatable, buffered, and provides added energy sources and vitamins necessary to help recover from dehydration. Use Bovine BlueLite to help cows rehydrate in times of heat stress to maintain normal body fluid and electrolyte balance helping ensure top performance.

Combat Heat Stress with NWF Supplements

Signs of heat stress

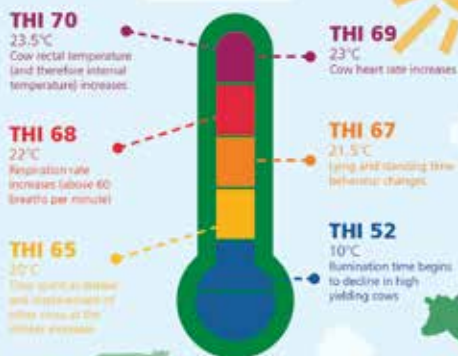
that occur when the THI level is equal or above these levels

EQUALISER® CREAM

Equaliser® Cream helps maximise milk fats when under pressure; such as during grazing, highly digestible diets or whilst feeding acidic pH silage.

EQUALISER® COOL COW

Equaliser® CoolCow is a unique blend designed to help and maintain production during temperature fluctuations and heat stressed cattle.



FATS

NWF EVOLUTION PROTECTED FAT

A cost-effective, high-quality rumen-protected fat for ruminants. High in energy and availability, this saturated fat is protected from rumen breakdown and will help improve the performance of high performing ruminant animals by meeting the energy demands which cannot be met using standard feeds.

NWF BUTTERFAT EXTRA

Butterfat Extra is a rumen protected fat extremely rich in energy and C16 fatty acids to boost milk production and milk fat content.

GOLDEN FLAKE

An extremely high energy, palatable, rumen protected fat to drive milk yield, increase milk fat and reduce body weight loss manufactured from palm fatty acids.

ENVIROLAC

Envirolac is the solution for farming and environmental sustainability, proven to increase milk yields and quality while offering a lower carbon footprint than palm-oil based fat supplements.

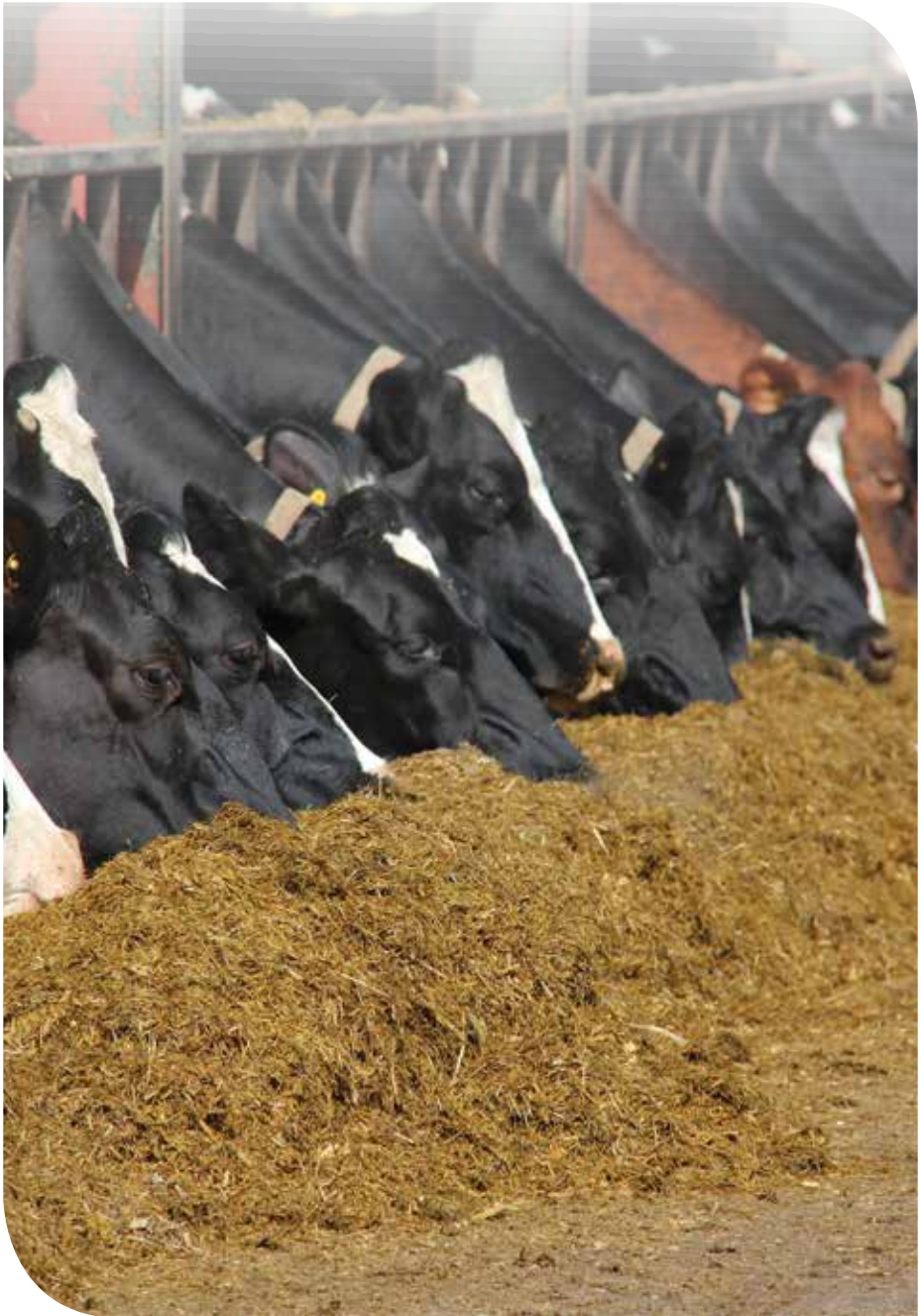
DYNALAC

A proven fat supplement for high-yielding herds, increasing dietary energy density to reduce body condition loss and improve overall production, health and fertility.

KEY BENEFITS OF FATS:

Improved peak and lactation yields	Improved fertility
Improved milk solids – Butterfat and Protein	Reduced risk of acidosis and ketosis
Improved Cow Condition	Reduced culling rates





MAIZE, CEREAL AND FORAGE SEED

NWF Agriculture supply a wide range of carefully selected maize, cereal and forage seeds, which have been bred by world-leading scientists and extensively field tested. Selected with an emphasis on high productivity, yield and strong environmental credentials, our wide range of maize, cereal and forage seeds present the opportunity to improve livestock performance, efficiency and animal health.

Maize

Whatever your needs are for maize in the coming year, we can offer you a wide range of maize seeds to suit all. From improving previous yields to more cost-effective feeding sources, get in touch with your local NWF sales specialist for more information on our current range of seeds.

Cereal and Forage

Cereals and Forage seeds typically have a higher growth rate than most pasture alternatives, rates may differ based on species, however they offer fantastic flexibility. Forage cereals can be harvested as cut and wilted crop, or as a direct cut and ensiled.

Due to slight changes in crops and seeds each year, please get in touch with your local NWF sales specialist or call our traded products desk for our latest range of maize, cereal and forage seeds.



GRASS SEED

ULTRA RENOVATE™

Ideal to improve the productivity of a low performing tired ley for 3-5 years.

ULTRA TURBO MIX™

A highly productive short term Italian ryegrass blend

AFTER MAIZE - FAST GRASS™

Delivering a high quality grass crop after maize has been harvested.

ULTRA EARLY ABUNDANCE™

The ultimate high yielding high quality short term cutting.

ULTRA HIGH-PRO RED™

An outstanding high yielding high protein cutting ley.

ULTRA HYBRID™

A high yielding cutting ley containing 3 of the best Hybrid ryegrass varieties available. Designed as an intensive cutting ley producing high quality silage for 3-5 years. It fits well into medium term rotations, is suitable for multi cut systems and AD plants.

ULTRA CUT 'N' GRAZE™

An excellent cutting and grazing ley for up to 5 years duration. Will produce top quality high yielding silage cuts. Gives the option to graze after cutting.

ULTRA INTENSIVE DAIRY™

A highly productive grazing ryegrass mixture that will give season long quality forage.

ULTRA LONGLIFE™

A permanent pasture mixture, with the option to take later cuts of quality silage.

CHAMPION WITH OR WITHOUT CLOVER™

The number one selling mixture. Our number one selling mixture. A proven long-term top class dual purpose mixture which produces excellent quality forage production whether cut or grazed.



SILAGE ADDITIVES

NWF ULTRA GUARD PLUS

NWF Ultra Guard Plus is specially designed for all higher dry matter crops to reduce losses from the presence of yeasts and moulds, and to keep silage fresh and palatable longer.

NWF ULTRA GUARD

NWF Ultra Guard is specially designed to optimise the fermentation process, maintain good palatability and to improve the forage digestibility in low sugar forages.

SILA-GUARD 50

NWF Sila-Guard 50 contains quick-acting bacteria and enzymes that convert valuable crop carbohydrates into energy for milk production. The additive has been formulated to produce high-quality silage with a balanced acid profile for your livestock.

SILA-GUARD 45

Sila-Guard 45 silage inoculant offers exceptional quality and value in conservation technology. The additive has been formulated to produce high-quality silage with a balanced acid profile for your livestock.

NWF SILA-GUARD MAIZE

NWF Sila-Guard Maize is a premixture of technological additives.

NWF SILA-GUARD WHOLE CROP

NWF Sila-Guard Whole Crop contains quick acting bacteria and enzymes that convert valuable crop carbohydrates into energy for milk production.

Top tips for quality silage

- Focus on clamp management monitoring for overheating and mould.
- Manage your forage crop paying attention to soil and crop condition to create rumen friendly silage.



CROP BAILING

BALER TWINE

Manufactured with the latest technology in the production of High Density and Ultra High Density Baler Twine, NWF Agriculture stock the COTESI UNITECH range. A new product range designed to stretch plastic further, whilst maintaining its molecular integrity during twisting and winding operations.

NETWRAP

NWF Agriculture stock a range a of high-quality netwraps, designed to meet the challenges of new balers whilst protecting your crop. Netwrap is produced with a combination of knitted threads designed to spread over the bale.

STRETCH FILM

Stretch Film is a blown, 7 layered film designed for high speed wrappers.



RECOMMENDED TWINES FOR DIFFERENT BALERS AND BALING CONDITIONS

No OF KNOTTERS		HAY GRASS LOW DENSITY BALES		HIGH DENSITY BALES STRAW		ULTRA HIGH DENSITY BALES STRAW			
4	BB72+ OR BIG BALE +			BIG BALE + BIG BALE XL NHD ONE	X	X			
6	BB72 +				UHD				
8	BB72 +				BIG BALE +				
ESTIMATED No OF PACKS NEEDED FOR 10000 BALES				TWINE REFERENCES					
BALE DIMENSIONS (m)				COTESI 72+	COTESI 72+ XL	COTESI BIG BALE+	COTESI BIG BALE+ XL	COTESI NHD ONE	COTESI UHD
WIDTH	HEIGHT	LENGTH	No OF KNOTTERS						
0.8	0.9	2.4	4	126	160	126	207		
1.2	0.7	2.4	6	178	225	178	291		337
1.2	0.9	2.4	6	189	239	189	310	280	359
1.2	0.9	2.4	8	253	319	253	413		

NWF Agriculture also sell a comprehensive range of feeds for your herd or flock



- **Compound Feeds**
- **Blends**
- **Straights**
- **Sugar Beet**
- **Protected Feeds**
- **Moist Feeds**
- **Grains**
- **Biscuit Blends**

Our comprehensive feed range is manufactured at our UFAS accredited mills across Cumbria, Cheshire and Devon.



Why go anywhere else?

Your one stop shop



Mix & Match minimum 3 tonne of each in bulk or minimum 1 tonne in totes.

FERTILISER

FERTILISER STRAIGHTS

NWF Agriculture have a comprehensive range of straight-based fertilisers.

In addition to Ammonium Nitrate, Ammonium Sulphate and Top Yield blends, we supply a range of straights for grassland, forage and arable crops.

FERTILISER BLENDS

NWF Agriculture have a comprehensive range of standard formulation and bespoke blended fertilisers. Whether you need a regular blend, or a product tailored to your particular circumstances, you can be assured of exceptional quality.



TECHNICAL SERVICES

BODY CONDITION SCORING

Body Condition Scoring (BCS) is a numeric score system to estimate the animals' body energy reserve.

It is a useful management tool to help aid decision making, helping to indicate the nutritional status of animals, as ideal live weight can vary from individual to individual. With variations in conditions directly impacting health, fertility and yield, understanding BCS can be a quick tool to assess your livestock.

COW SIGNALS®

The concept is simple – it's about reading cow behaviour with the aim to improve their surroundings or routine, enabling farmers to increase production and longevity whilst lowering costs. The Cow Signals diamond focuses on the six freedoms of a cow; feed, water, light, air, rest and space.

DUNG SIEVING

For those looking to produce more milk, you must understand what your cows are getting from their diet.

There are several methods you can use to determine rumen health, but one of the easier and faster options is dung sieving.

We recommend a three tiered dung sieve, giving you the most accurate result. Typically, we recommend getting approximately 10% of the herd number in dung samples, allowing for all bases to be covered, for larger herds, a total of 50 samples will suffice.

Our technical team recommends the Nasco Digester, along with a set of accurate digital weigh scales, notebook, smartphone for photos, gloves, scoop and access to a hose pipe. If you require this service, please get in touch with your rep and they will arrange to visit and carry out the assessment.

DIET SIEVING A diet sieving guide for traded products

Sieving a diet can be done to gain a further understanding of the physical components and the consistency of a ration. It can help assess the efficiency of the mixer on farm and can also highlight if the cattle are sorting their ration.

FORAGE ANALYSIS

The foundation of effective ration planning is an understanding of the feed value of forages. We offer a full Forage Analysis Service from our on-site laboratory at Wardle, which is maintained and quality assured through the Forage Analyses Assurance network.

DAIRY COSTINGS

We can provide a dairy costings service to stimulate discussion, help customers with their business efficiency and highlight areas that might need improving. Your local sales representative can meet customers on the farm to discuss their results using graphing tools.

SOIL ANALYSIS

The Soil Analysis Service enables accurate assessment of the correct levels of the most important nutrients that should be applied to grassland, arable and forage crops.

SOIL SAMPLING PATHS

When taking soil samples, individual samples should follow a carefully thought-out route. The 'w-pattern' can be easily adapted to most shapes of field. Avoid areas which are not representative of the field, such as gateways, headlands, hedges, ditches, footpaths, fences, telegraph poles, or dumps of fertiliser, lime or manure.

YOUNGSTOCK TEAM & SERVICES

NWF Agriculture has developed a Youngstock team, with specialists to help improve the health and performance of calf rearing units and businesses, providing advice and services ranging from testing colostrum and monitoring growth to devising protocols and staff training. The NWF Youngstock Team has both a wealth of industry and youngstock knowledge, experience and technical understanding, designed to help with a wide range of youngstock related areas.



Disclaimer

Any information provided in this NWF Traded Product Guide is given in good faith and to the best of our existing knowledge. Any advice should therefore be taken as a general guide only and not relied upon for all conditions and circumstances. We cannot accept any legal liability for information provided within the catalogue. In any instance where there are shortages in specified varieties we reserve the right to substitute equivalent varieties.
© NWF Agriculture 2024. All Rights Reserved.



AGRICULTURE

NWF Agriculture Ltd
Wardle, Nantwich, Cheshire, CW5 6AQ
www.nwfagriculture.co.uk
0800 756 2787
01829 797 100

